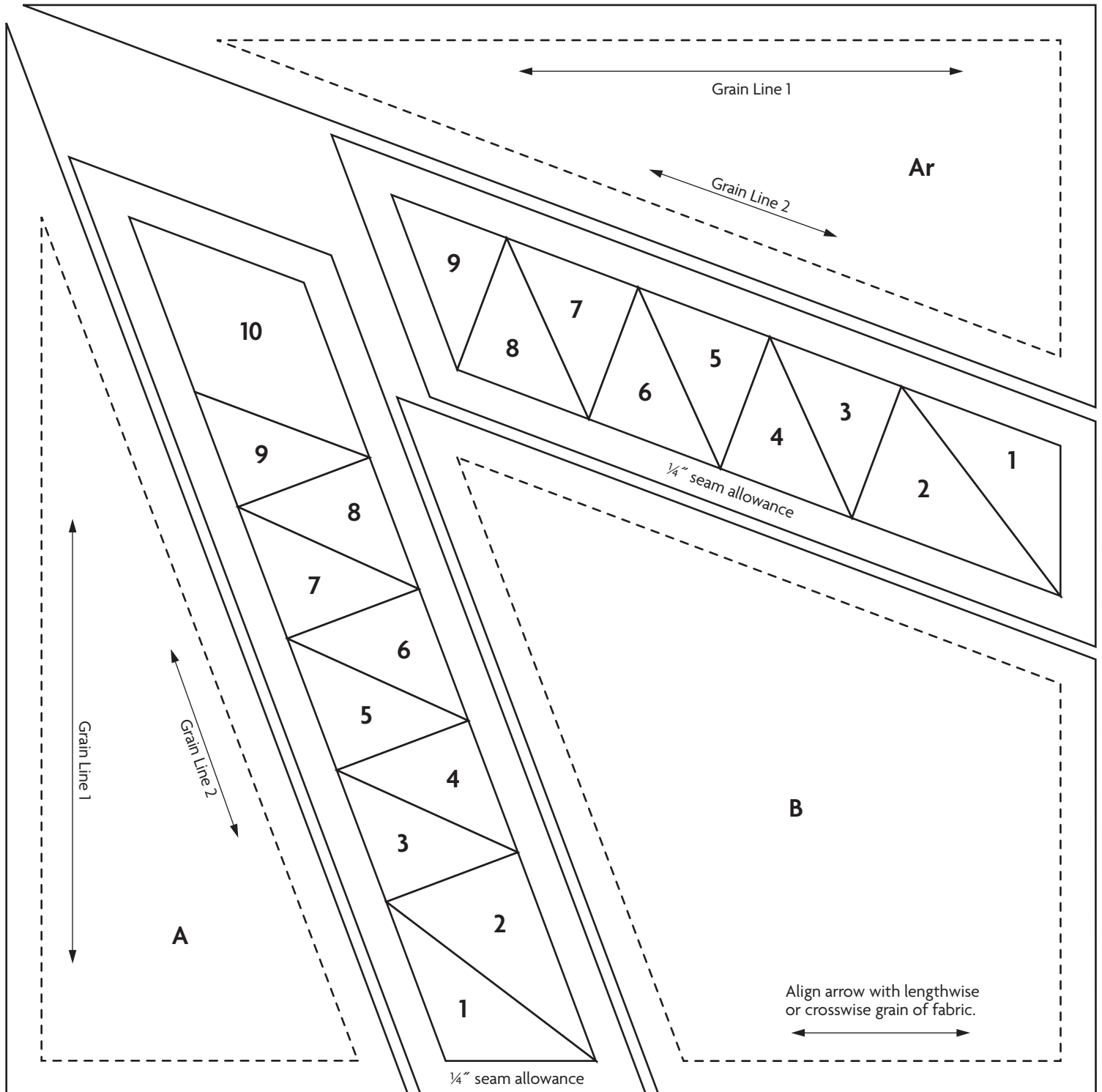


# Orange Range

DESIGNED AND MADE BY TOMOKO TOHNO

## Patches and Foundations for Block Y

The pattern for this lovely quilt is in the May 2008 issue of *Quilters Newsletter* (issue 402). Patterns are given here for the foundation triangles and patches A-D. Photocopy the patterns 4 times for each block. Follow the directions in the magazine to cut A and Ar patches on striped fabrics and to make the blocks.



# Orange Range

DESIGNED AND MADE BY TOMOKO TOHNO

